

LED Mini Strip Light

PRODUCT FEATURES:

- ❖ cETLus and DLC V5.0 Premium with 130lm/w.
- ❖ High efficiency LED Driver, voltage AC100-277.
- ❖ Screw Mount or Magnetic Mount.
- ❖ Linear Ambient Fixture or Troffer Retrofit kits.
- ❖ Comfortable Light Out due to Excellent Optics Design.



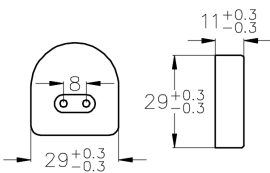
MODEL #	
PROJECT:	
NOTES:	
DATE:	
PREPARED BY:	



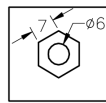
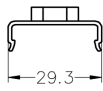
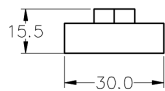
PRODUCT APPLICATIONS:

The Mini Strip LED Lighting Series can be widely used for Indoor (Dry Location) Excellent for Offices, Hallways, Multipurpose Rooms , Office Buildings, Conference Rooms,super market, store and many other applications.

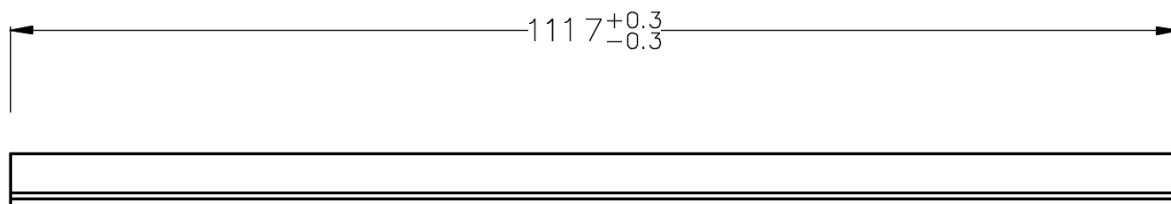
Specifications:



Lamp head



Buckle



Structure Features:

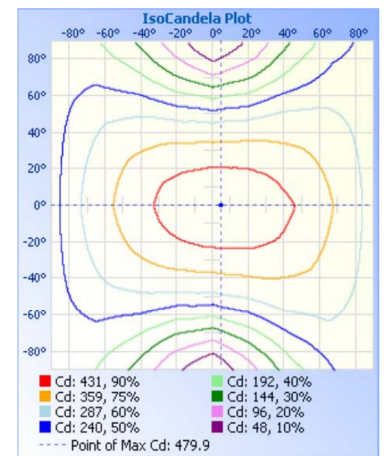
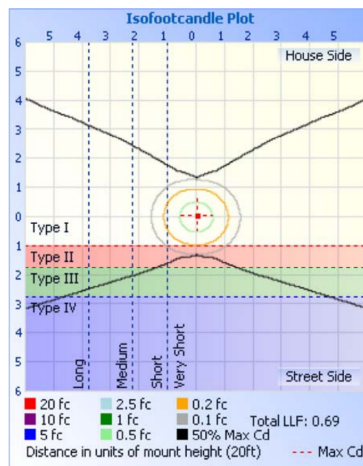
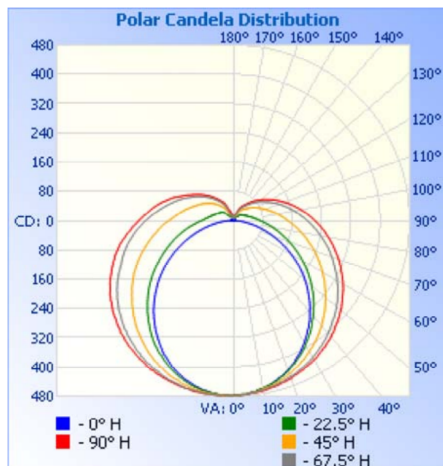
- Shell Materials: Aluminum & PC
- Finish: White
- Net Weight: 1.25KG (2.8 LBS)
- Carton Size: 1250mm*210mm*200mm (36Pcs/CTN)

LED Mini Strip Light

TECHNICAL PARAMETERS:

Type	STMN4FT12W-2-24W-XXK		
Power	24W/30W/36W 45W/60W/64W	Lighting Angle	Type C
Input Voltage	AC120-277V	LED Brightness Decay	<5%/6000 hrs
PF	>0.98	Working Life	>75000 hrs
Driver Efficiency	>90%	Working Temperature	-20 - +40°C
Luminous Flux	3120/3900/4680/ 5850/7800/8320 (Lm)	Storage Temperature	-20 -+40°C
Color Temperature	3000K/4000K/5000K	Protection Level	Dry
CRI	Ra>80	Cable	Input Connect

PHOTOMETRY:



ORDERING EXAMPLE: STMN4FT12W-2-24W-XXK

STMN	4FT	12W	2	24W	XXK
Product	Size	Power	Round way	Power	ColorTemp
STMN LED Mini Strip Light	4 FT (4feet)	12W/15W/18W (Power of each kit)	2 (1 by 2 linking cable) 3 (1 by 3 linking cable) 4 (1 by 4 linking cable)	24W(24W) 30W(30W) 36W(36W) 45W(45W) 60W(60W) 64W(64W)	30K (3000K) 40K (4000K) 50K (5000K)



WSD LED INC
Green Lighting Resources

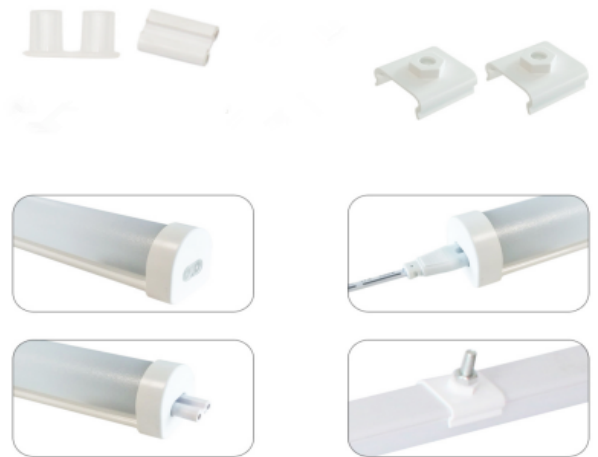
24W/30W/36W
45W/60W/64W

LED Mini Strip Light

Mini Strip Light - accessories:

standard accessory

optional accessory



magnetic buckle



magnetic buckle

1 by 4 linkable cable

switch & wire cable

Mini Strip Light-proposal:

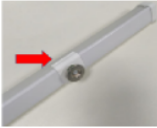



Item	Description	Model No.	Connection	Length	W*D (inch)	Input (V)	Power (W)	Lumen (lm)
LED Mini Strip Light	Ra>80, 130lm/w; 3000K / 4000K / 5000K ;Private mold, special design in the market; Linkable to 30pcs max; Suitable for damp location;	STMN4FT12W-2-24W-XXK	1 by 2	4FT	1.18*1.14	AC100-277V	24W	3120lm
		STMN4FT15W-2-30W-XXK	(1 by 2 linking cable and magnetic mounting included)				30W	3900lm
		STMN4FT18W-2-36W-XXK					36W	4680lm
		STMN4FT12W-3-36W-XXK	1 by 3	4FT			36W	4680lm
		STMN4FT15-3-45W-XXK	(1 by 3 linking cable and magnetic mounting included)				45W	5850lm
		STMN4FT12-4-45W-XXK	1 by 4	4FT			45W	5850lm
		STMN4FT15-4-60W-XXK	(1 by 4 linking cable and magnetic mounting included)				60W	7800lm
		STMN4FT18-4-64W-XXK					64W	8320lm

Notes:

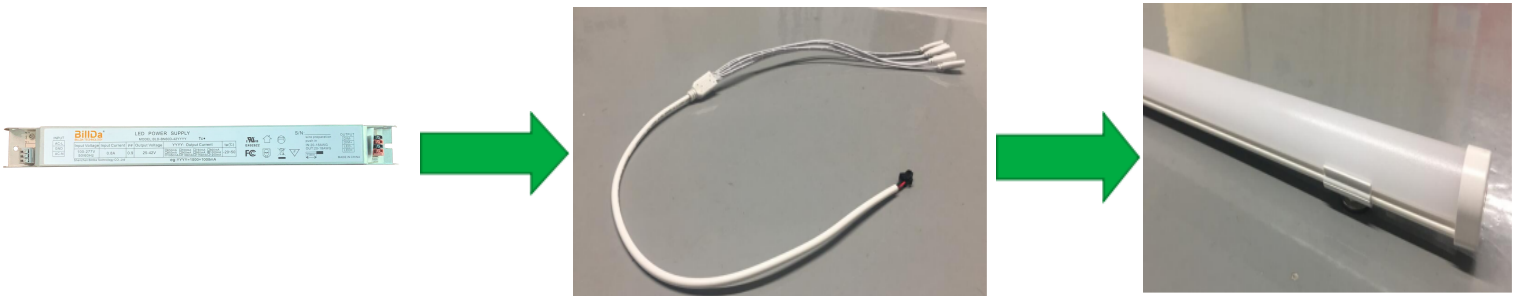
1. Package: 30pcs/Ctn;
2. MOQ: 3000pcs;
3. Standard Accessories: Screw Mounting, small connector, cable(one end for the strip, the other end for the AC direct), magnetic mounting, linking cable.

LED Mini Strip Light

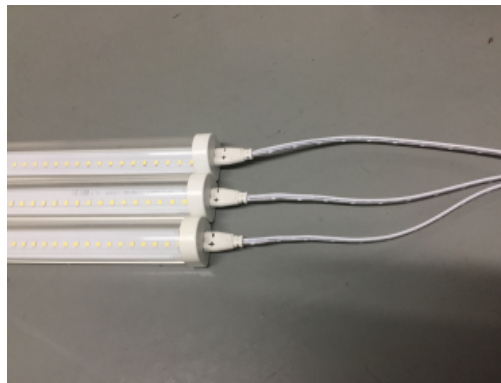
Mini Strip Light-optimal accessories:

Type	Magnetic Mounting one set (two pcs)MOQ1000	Cable (One end for one strip, another end for another strip)MOQ1000	Multi-Cable(One end for several strips, the other end for AC Direct) MOQ5000	Cable with Wire and Switch (5ft long) MOQ5000
Pictures				

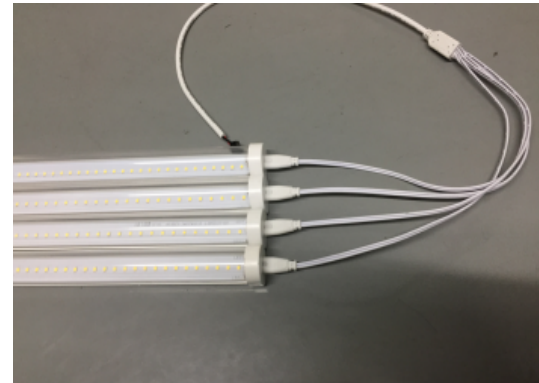
Mini Strip Light-convinent installatin:



1by2



1by3

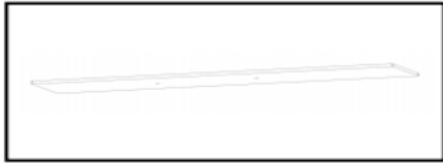


1by4

LED Mini Strip Light

Mini Strip Light-convinent installation:

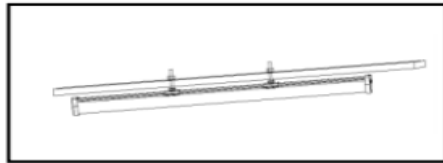
A: Nut fixed



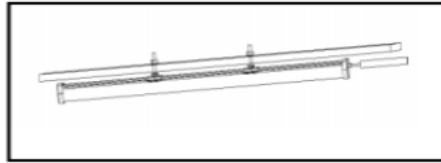
1, Drill 2 hole in $\phi 7\text{mm}$ at fixed plate



2, Fix the buckle to the plate by nut



3, Put the mini Strip fixture to the buckle



4, Connect the AC wire by connector.

B: Wire installtion



1. Connect the wire and buckle



2, Fix the other side of the wire to a fixed place

Mini Strip Light- applications:

